

# POS Machines

## 1) Smart POS 1130 (15.6'')







## Overview:

<b>Display</b>	<b>15.6" Industrial Grade A LED (16:9)</b>
<b>Resolution :</b>	<b>1366*768 (Optional 1920*1080)</b>
<b>Brightness :</b>	<b>400 CD/m<sup>2</sup></b>
<b>Mother board :</b>	<b>Industrial Grade Motherboard J1900</b>
<b>CPU :</b>	<b>J1900, I3</b>
<b>Memory :</b>	<b>DDR3 128gb SSD</b>
<b>I/O :</b>	<b>USB x 6 ; RJ45 x 1 ; COM x 1 ;VGA x 1; PS/2 x 2;LPT x 1;MIC x 1; Audio x 2</b>
<b>Touchscreen :</b>	<b>Capacitive 10 point touch screen</b>
<b>Customer Display :</b>	<b>None Display(VFD220 Optional)</b>
<b>OS support :</b>	<b>Windows XP/ Win 7/ Win 10 /Linux</b>
<b>Power Supply :</b>	<b>Power Supply (100-260V AC (50-60Hz) 12V 5A</b>
<b>Color :</b>	<b>Black /White</b>
<b>Accessories: (Optional)</b>	<b>Cash Drawer</b>
	<b>Thermal Printer (58 mm/80 mm)</b>
	<b>Barcode Scanner Black (one-dimension/two-dimension)</b>
	<b>Card Reader (Integrated MSR)</b>
<b>Packing :</b>	<b>Single Box with Inner Foam / 430*280*430mm/G.W.: 7.5 KGS</b>

## 2) Smart POS 1150 - 15 “





# Overview:

<b>Display</b>	<b>15" LED Display</b>
<b>Resolution :</b>	<b>(1024*768)</b>
<b>Brightness :</b>	<b>400 CD/m<sup>2</sup></b>
<b>Mother board :</b>	<b>Industrial Grade Motherboard J1900</b>
<b>CPU :</b>	<b>J1900, I3, I5</b>
<b>Memory :</b>	<b>DDR3 128gb SSD</b>
<b>I/O :</b>	<b>USB x 6 ; RJ45 x 1 ; COM x 1 ;VGA x 1; PS/2 x 2;LPT x 1;MIC x 1; Audio x 2</b>
<b>Touchscreen :</b>	<b>Capacitive 10 point touch screen</b>
<b>Customer Display:</b>	<b>None Display(VFD220 Optional)</b>
<b>OS support :</b>	<b>Windows XP/ Win 7/ Win 10 /Linux</b>
<b>Power Supply :</b>	<b>Power Supply (100-260V AC (50-60Hz) 12V 5A</b>
<b>Color :</b>	<b>Black /White</b>
<b>Accessories: (Optional)</b>	<b>Cash Drawer</b>
	<b>Thermal Printer (58 mm/80 mm)</b>
	<b>Barcode Scanner Black (one-dimension/two-dimension)</b>
	<b>Card Reader (Integrated MSR)</b>
<b>Packing :</b>	<b>Single Box with Inner Foam / 430*280*430mm/G.W.: 7.5 KGS</b>

### 3) POS WITH VFD







## POS Overview:

**Warranty: 1 year**

**Operation System: Win10**

**CPU: Quad core 2.0GHz, Quad core 2.0GHz**

**Touch Screen Type: Capacitive Screen**

<b>Hard Disk Capacity: 128GB SSD</b>
<b>Interface: 2com, 6USB, LAN</b>
<b>RAM: 4GB</b>
<b>Motherboard: J1900/i3/i5</b>
<b>Certification: CE FCC ROHS</b>
<b>Material: Aluminum Alloy</b>
<b>Color: White / black</b>
<b>OS: win10</b>
<b>Accessories (Optional): Cash Drawer, Thermal Printer (58 mm/80 mm), Barcode Scanner Black (one-dimension/two-dimension), Card Reader (Integrated MSR)</b>

VFD Overview:



<b>Display Method</b>	<b>Vacuum Fluorescent Display (Blue-green)</b>
<b>Number characters</b>	<b>of 40 (20 columns* 2 lines)</b>
<b>Brightness</b>	<b>500~1000 cd/m<sup>2</sup></b>
<b>Character font</b>	<b>5* 7 dot matrix</b>
<b>Character size</b>	<b>9.02(H)* 5.25(W)mm</b>
<b>Dot Size ( X* Y )</b>	<b>0.86* 1.05mm</b>
<b>Download characters</b>	<b>9 characters</b>

<b>Viewing Angle</b>	<b>Max. 135°</b>
<b>Horizontal Rotation</b>	<b>Max. 355°</b>
<b>Consumption</b>	<b>5~24V DC</b>

#### 4) Double Screen POS







## Product overview:

<b>Mainboard</b>	<b>(J1900/i3/i5)</b>
<b>CPU</b>	<b>Intel Celeron Dual-core 2.4GHz processor</b>
<b>RAM</b>	<b>4GB, DDR3</b>
<b>Hard disk</b>	<b>128 GB SSD</b>
<b>Monitor</b>	<b>15inch LED touch(1024*768)</b>
<b>Touch Screen</b>	<b>10point capacitive touch screen, 15inch</b>
<b>Customer Display</b>	<b>9 inch LED (1024*768)</b>
<b>Power Supply</b>	<b>Power adapter (100~240V, 50/60Hz)</b>
<b>Power Input</b>	<b>12V,7A</b>
<b>Operating System</b>	<b>Windows10</b>
<b>Warranty</b>	<b>1 year</b>
<b>connections</b>	<b>Wi-Fi, Bluetooth, LAN</b>
<b>screen</b>	<b>10 point capacitive touch screen</b>
<b>Optional accessories</b>	<b>Thermal Printer, MSR, Cash drawer, barcode scanner</b>

# NOVO POS series

## NOVO 2600















## Product Details:

CPU	Quad core J1900
Chipset	Intel
RAM	4G
OS Support	Windows 10
Display	
Display	15" LED
Brightness	300 nits
Resolution	1024 x 768
Touch Screen	Capacitive touch screen
Tilting Angle	35-90 Degree

Storage	
SSD	128G SSD
SATA Slot	1 x mSATA Slot
I/O Ports	
Serial	2 x COM with Power Selected 5/12V (COM 2/3), Selected by Jumper, 1 x COM without Power Output (COM 1), COM2 is Customer Display
USB	6 x USB 2.0 (External), 2x USB 2.0, (Internal, reserved for touch screen, MSR)
LAN	1 x RJ-45, Giga LAN
VGA	1 x DB-15, Female
DC Out	Optional: 1 x +12VDC Jack (Customer Display or 2nd Display)

Audio Jack	1 x Line Out, 1 x MIC In,1 x Internal Speaker
Optional	MSR,VFD customer display,10 inch customer display.



# NOVO 3700





## Product Details:

CPU	Quad core J1900
Chipset	Intel
RAM	4G
OS Support	Windows 10

Display	
Display	15" LED
Brightness	300 nits
Resolution	1024 x 768
Touch Screen	Capacitive touch screen
Tilting Angle	35-90 Degree
Storage	
SSD	128G SSD
SATA Slot	1 x mSATA Slot
I/O Ports	

Serial	2 x COM with Power Selected 5/12V (COM 2/3), Selected by Jumper, 1 x COM without Power Output (COM 1), COM2 is Customer Display
USB	6 x USB 2.0 (External), 2x USB 2.0, (Internal, reserved for touch screen, MSR)
LAN	1 x RJ-45, Giga LAN
VGA	1 x DB-15, Female
DC Out	Optional: 1 x +12VDC Jack (Customer Display or 2nd Display)
Audio Jack	1 x Line Out, 1 x MIC In, 1 x Internal Speaker
Optional	MSR, VFD customer display, 10 inch customer display.

# Android POS Machines

## Smartpos 1150 A

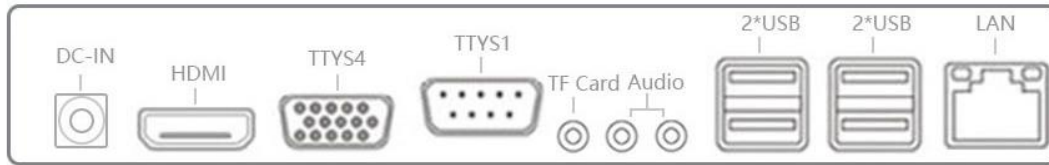






# Interface Port

## I/O Android interface-RK3288



## Product Details:

Main Board	Android
CPU	RK3288
Chipset	RK3288
OS Support	Android 7.1/9.0
Display	15.6" LED



Brightness	250 nits
Resolution	1366*768 or 1920*1080P
Touch Screen	Multi-point Capacitive touch screen
SSD	128GB
Memory	4GB
USB	5 x USB 2.0 (External),2x USB 2.0,(Internal, reserved for touch screen, MSR)
LAN	1 x RJ-45, Giga LAN
VGA	1 x DB-15, Female
Wifi	IEEE802.11b/g
Optional	MSR, VFD customer display,11.6 inch customer display

# Mobile POS







## **Long-lasting Working Time**

Built-in 5000mah Rechargeable Battery

---



# Product details:

Warranty: 1 Year
Operation System: Android OS
CPU: 4 Core Cortex A53 1.25G Hz
Touch Screen Type: Capacitive Screen
Hard Disk Capacity: 4GB ROM
CPU: 4 Core Cortex A53 1.25G Hz
Storage: 1GB RAM+4GB ROM
Display: 5.5" HD Screen, Highest Resolution 1280 x 720
Data communication: cellular data / Wi-Fi
Touch: G+F Capacitive Multi-Touch
Camera: 5,000,000 Fixed Focus
Battery: 7.4V / 5000mAh
Printer: Built-in 58mm Thermal Receipt Printer
I/O: Charging Socket, USB, SIM Slot
Speaker: 1W Single Channel

# POS Peripherals

- ◆ 10'' display





Item	Specification
Display Mode	10.1"/ $\alpha$ -Si TFT/IPS/ Transmissive/Normally Black
Resolution	1280x800
Outline Size	248x170.5x7.5mm
Active Area(W x H)	216.96x135.6mm
View Direction	All O'clock
Pixel Pitch	0.1695x0.1695
Interface	USB
Backlight	36LEDs, 360mA, 12.8V
Surface Luminance	750-800nits
Logic Voltage	VDD=3.3V



◆ VFD





<b>Display Method</b>	<b>Vacuum Fluorescent Display (Blue-green)</b>
<b>Number of characters</b>	<b>40 (20 columns* 2 lines)</b>
<b>Brightness</b>	<b>500~1000 cd/m<sup>2</sup></b>

<b>Character font</b>	<b>5* 7 dot matrix</b>
<b>Character size</b>	<b>9.02(H)* 5.25(W)mm</b>
<b>Dot Size ( X* Y )</b>	<b>0.86* 1.05mm</b>
<b>Download characters</b>	<b>9 characters</b>
<b>Viewing Angle</b>	<b>Max. 135°</b>
<b>Horizontal Rotation</b>	<b>Max. 355°</b>
<b>Consumption</b>	<b>5~24V DC</b>

◆ **MSR (Magnetic Stripe Reader)**





Card reader	Bi-directional card reader
Usage for	Reads credit cards, bank cards, driver's licenses and ID cards
Tracks	All tracks are available (Tracks 1, 2 and 3)
cards	Reads low and high coercively cards (300 to 4000 OE)
LED	LED for status
System	Windows, Mac and other USB capable systems.
color	black

# ◆ Thermal Printers

## 80mm Thermal Receipt Paper printer

- 1) order prompting
- 2) with auto-cutter
- 3) 160mm/s high print speed
- 4) take-out order print





# Specifications:

<b>PRINTING</b>	<b>Printing method</b>	<b>Direct thermal printing</b>
	<b>Paper roll size</b>	<b>Φ 80mm</b>
	<b>Effective printing width</b>	<b>72mm or 48mm</b>
	<b>Resolution</b>	<b>203dpi</b>
	<b>Printing speed</b>	<b>160mm/s - 250mm/s</b>
	<b>Printing density</b>	<b>576 dots/line or 384 dots/line</b>
	<b>Character set</b>	<b>GB18030</b>
	<b>Character per line</b>	<b>Font A-48 lines/Font B-64 lines</b>
<b>Auto cutter</b>	<b>1.5 million cuts</b>	
<b>Interface</b>	<b>U,L,L-P,US,USE,USE-P</b>	
<b>Paper out detection function</b>	<b>optional</b>	
<b>Driver</b>	<b>WIN2003/WINXP/WIN7/WIN8/WIN10/LINUX/Mac</b>	
<b>Power supply</b>	<b>DC 24V,2.5A</b>	
<b>Cash drawer Control</b>	<b>DC 24V,1A</b>	



## ◆ **Scanner cables**

**480 Mbps USB 2.0 Printer Scanner Cable type a type b  
printer cable**



**USB 2.0 to RJ45 scanner cable for barcode scanner Cable**



## ◆ Ethernet Cat 6 Cable



## ◆ Thermal Printer Adapter



◆ **POS adaptor**

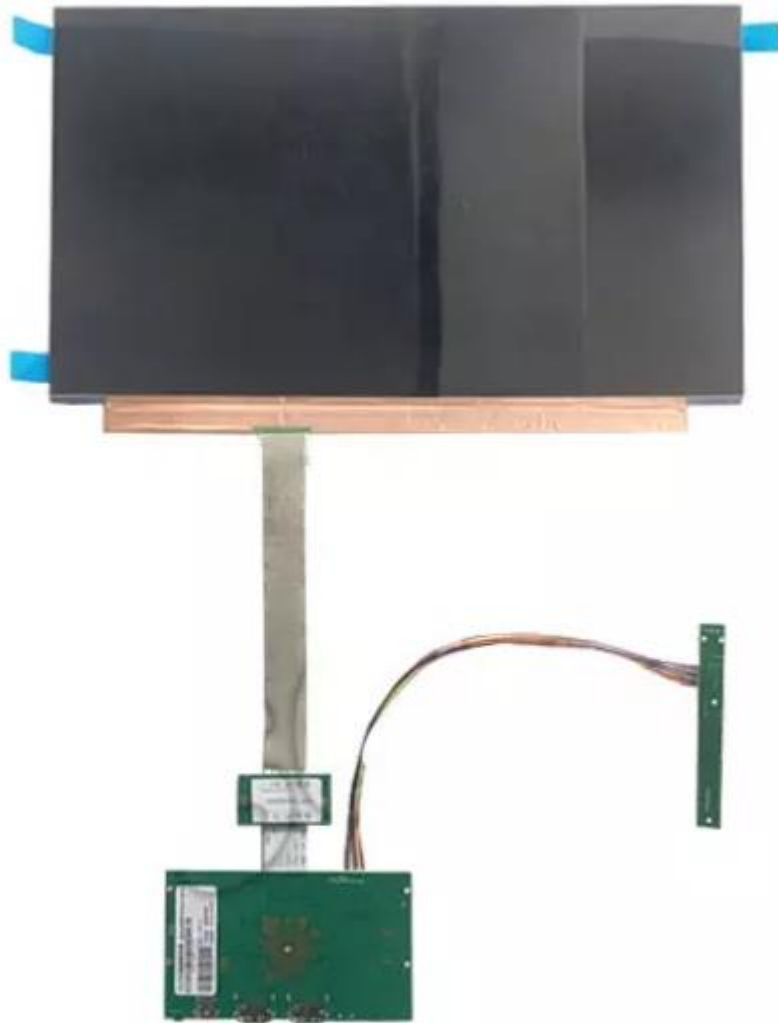


# Screen Display

15.6''







### 1. Product Features

Display Size	15.6"
Display Type	a-Si TFT-LCD
Resolution	1024*600
Display mode	IPS



LCM Luminance (cd/m <sup>2</sup> )	450 cd/m <sup>2</sup> (Typ.)
Contrast Ratio	800:1
Color Depth	16.7M , 51% NTSC
Backlight Type	WLED [3S6P] ,30000H
Refresh rate	60Hz
Interface	RGB 24bit ,FPC, 50 pins
LCD power voltage	3.3V (Typ.)
Touch Type	Capacitive touch

# 10.1''





## Product Details:

Display Size	10.1"
Display Type	a-Si TFT-LCD
Resolution	1024*600
Aspect Ratio	16:10
View Area	223.5*126mm
Display mode	IPS

LCM Luminance (cd/m <sup>2</sup> )	450 cd/m <sup>2</sup> (Typ.)
Contrast Ratio	800:1
Color Depth	16.7M , 51% NTSC
Backlight Type	WLED [3S6P] ,30000H
Refresh rate	60Hz
Interface	RGB 24bit ,FPC, 50 pins
LCD power voltage	3.3V (Typ.)
Touch Type	Capacitive touch